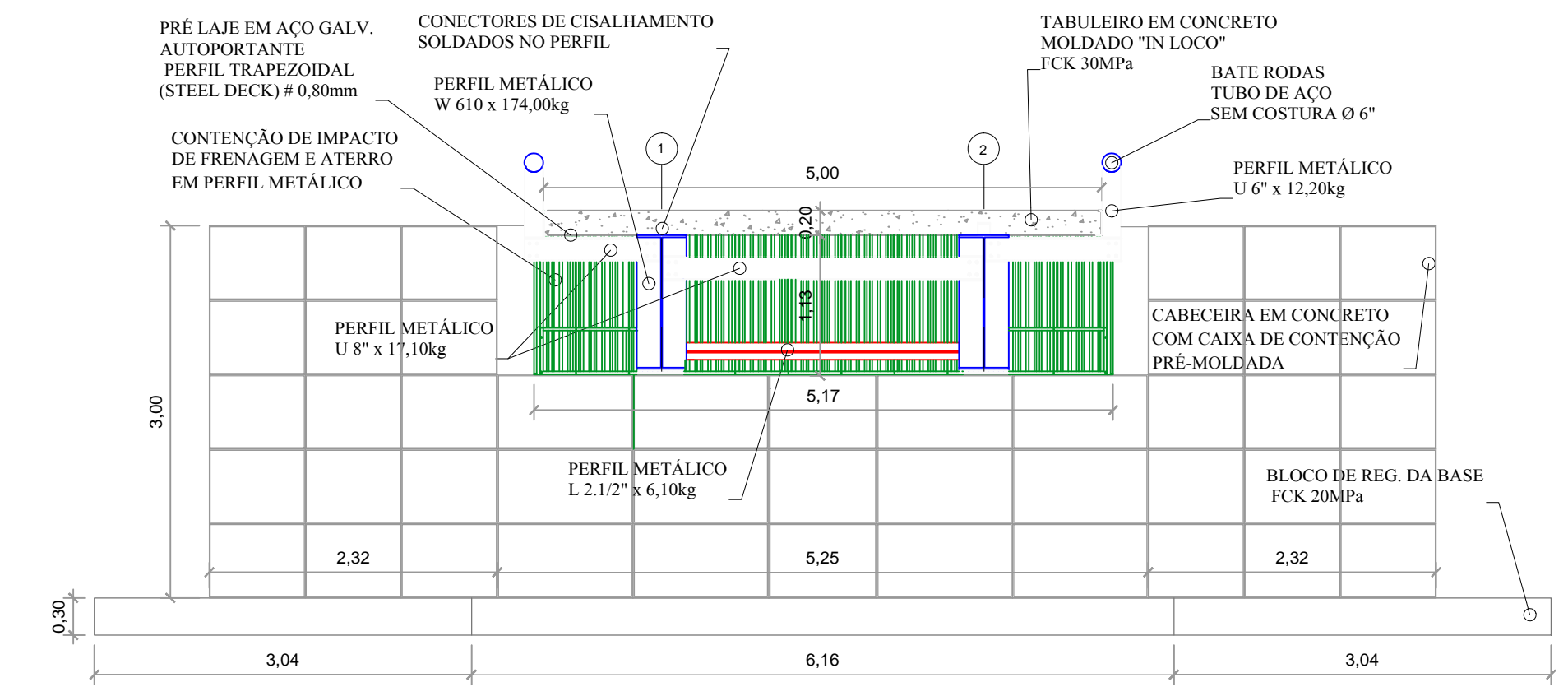


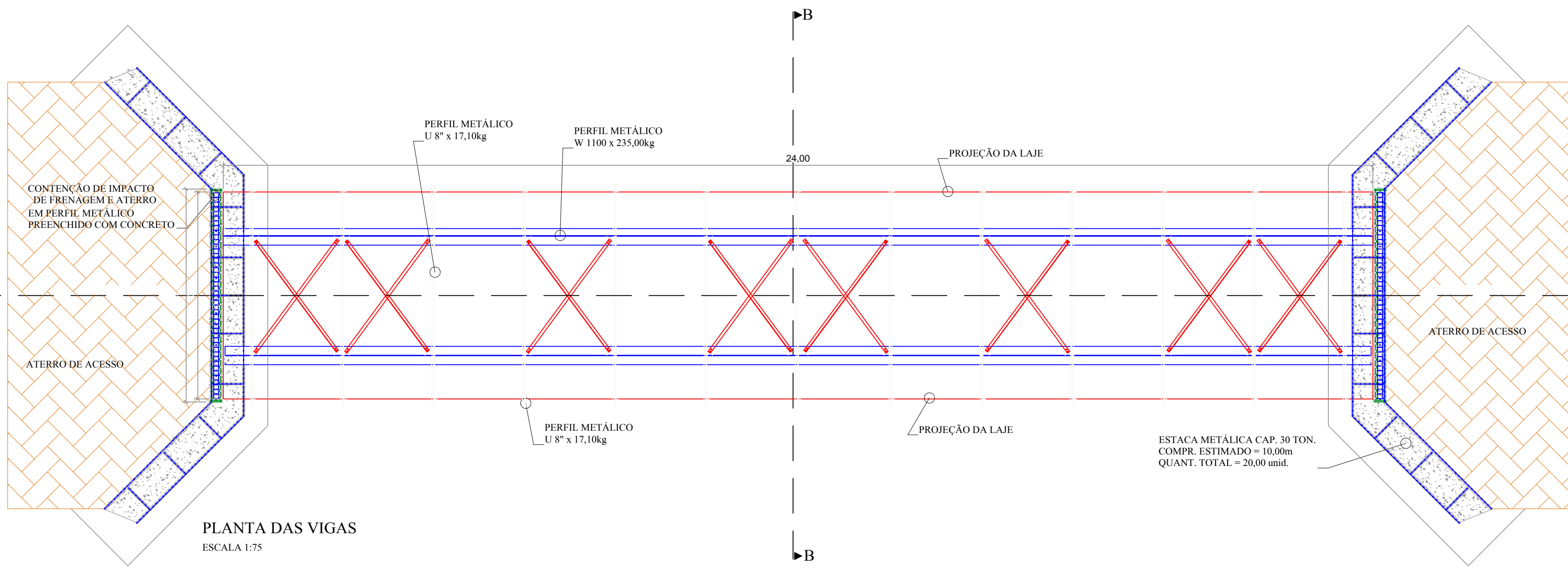
CORTE AA
ESCALA 1:75



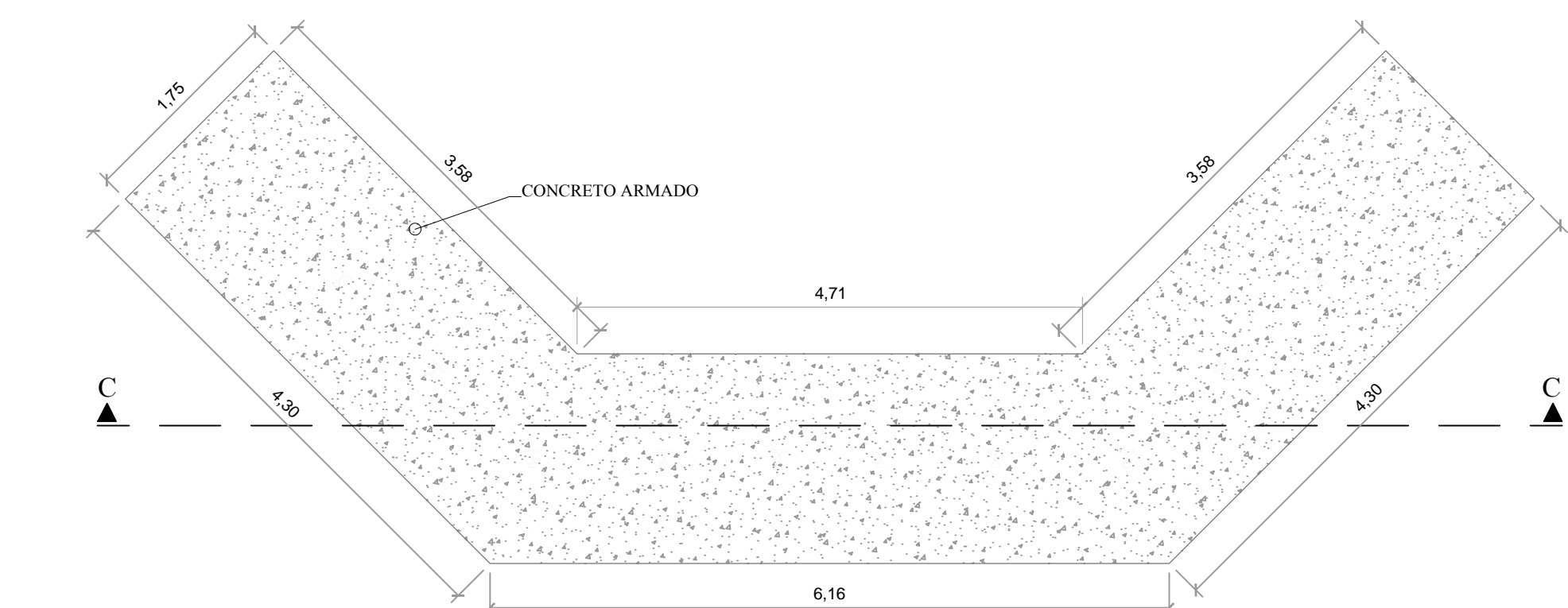
CORTE BB
ESCALA 1:50



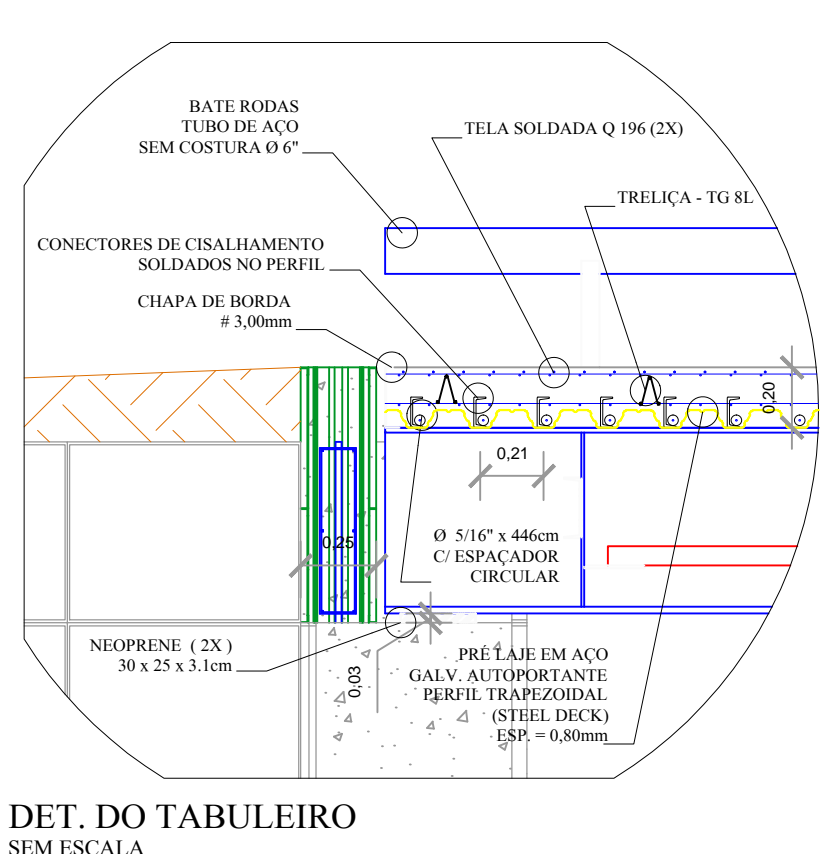
PERSPECTIVA DA CABECEIRA



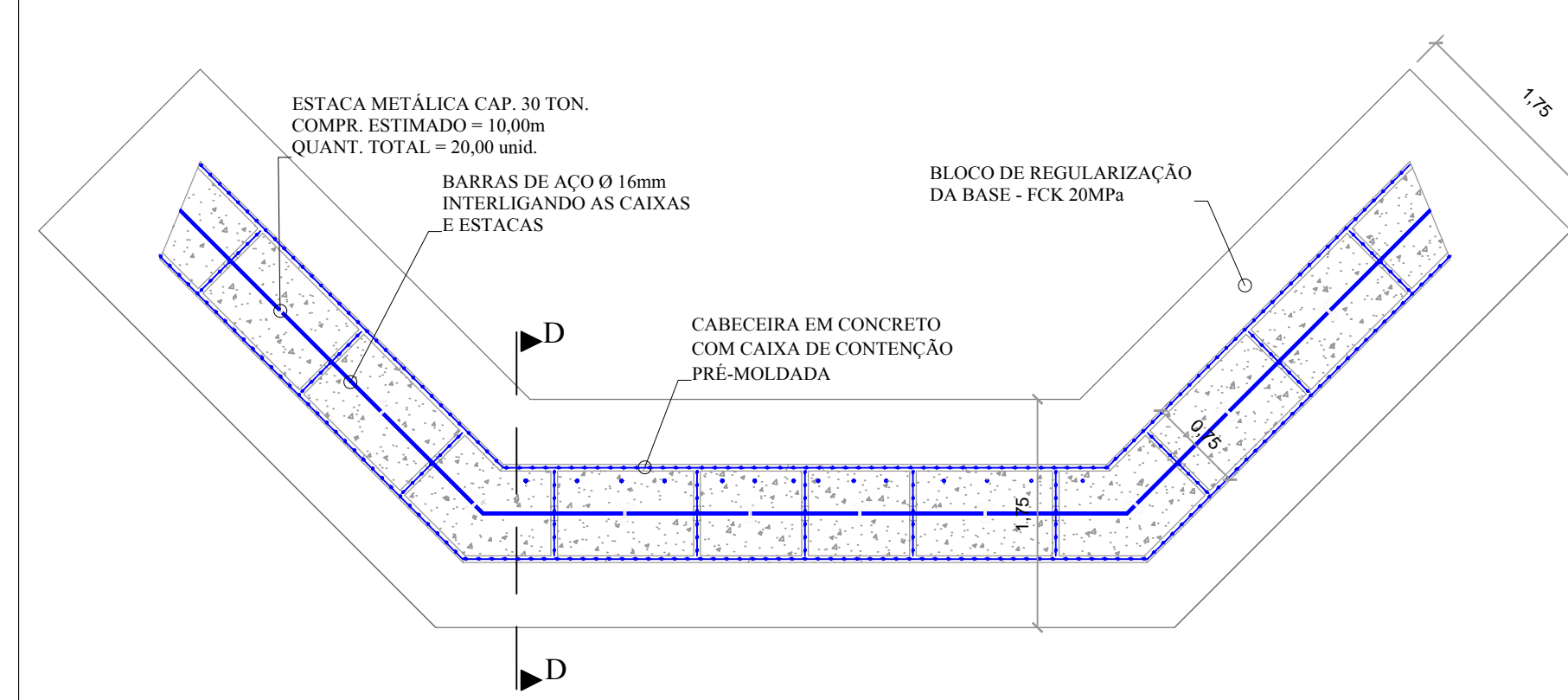
PLANTA DAS VIGAS
ESCALA 1:75



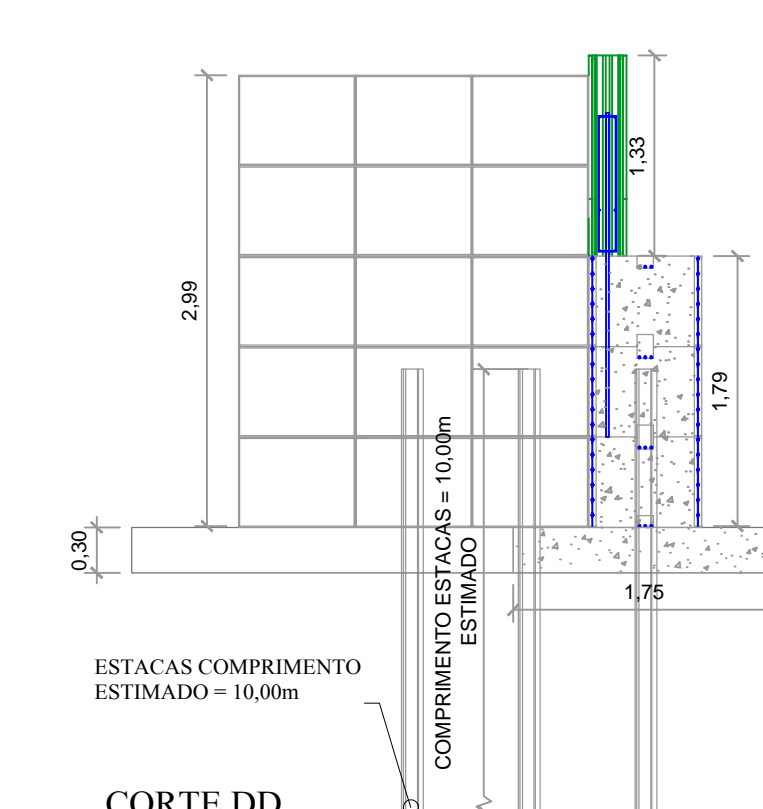
PLANTA DO BLOCO DE REGULARIZAÇÃO DA BASE
ESCALA 1:50



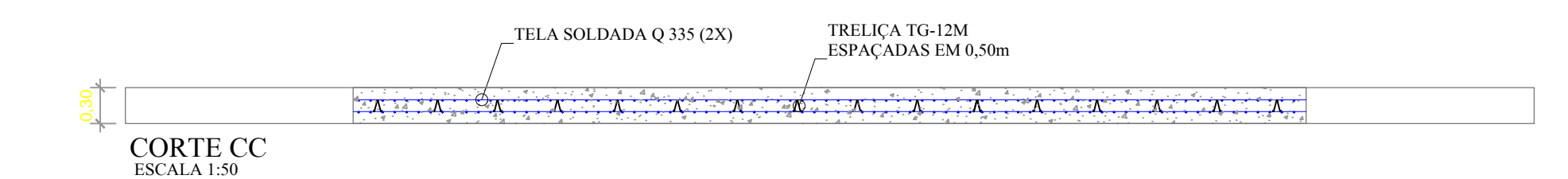
DET. DO TABULEIRO
SEM ESCALA



PLANTA DA CABECEIRA (2X)
ESCALA 1:50



CORTE DD
ESCALA 1:50



CORTE CC
ESCALA 1:50

	PREFEITURA MUNICIPAL DE ÁGUA BOA - MT	
	TÍTULO: PROJETO DE PONTE MISTA 24,00M x 5,00 M	
ENDEREÇO: PONTE SOBRE O RIO VANIC AREA RURAL - AGUA BOA - MT	DATA: MARÇO/2016	
RESPONSÁVEL TÉCNICO: LUIZ FERNANDO PEREIRA CREA 170.633.6586-RN	ESCALA: INDICADAS	FOLHA: 01